

ARRIVAL TIMES

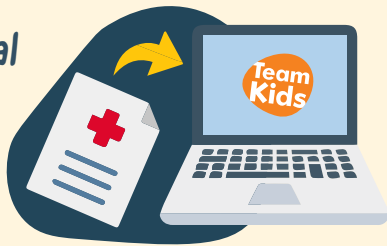


ARRIVE BY 9AM



MEDICAL INFO

Upload medical plans to your TeamKids account



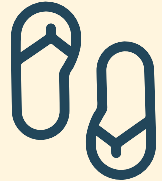
Complete a risk minimisation form with staff on your first day

Bring medication in original packaging



LABEL IT CLEARLY

WHAT TO WEAR



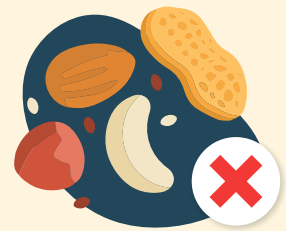
LUNCH & SNACKS



Bring lunch and refillable water bottle



Delicious morning and afternoon tea are provided



Be allergy aware and please don't bring nuts